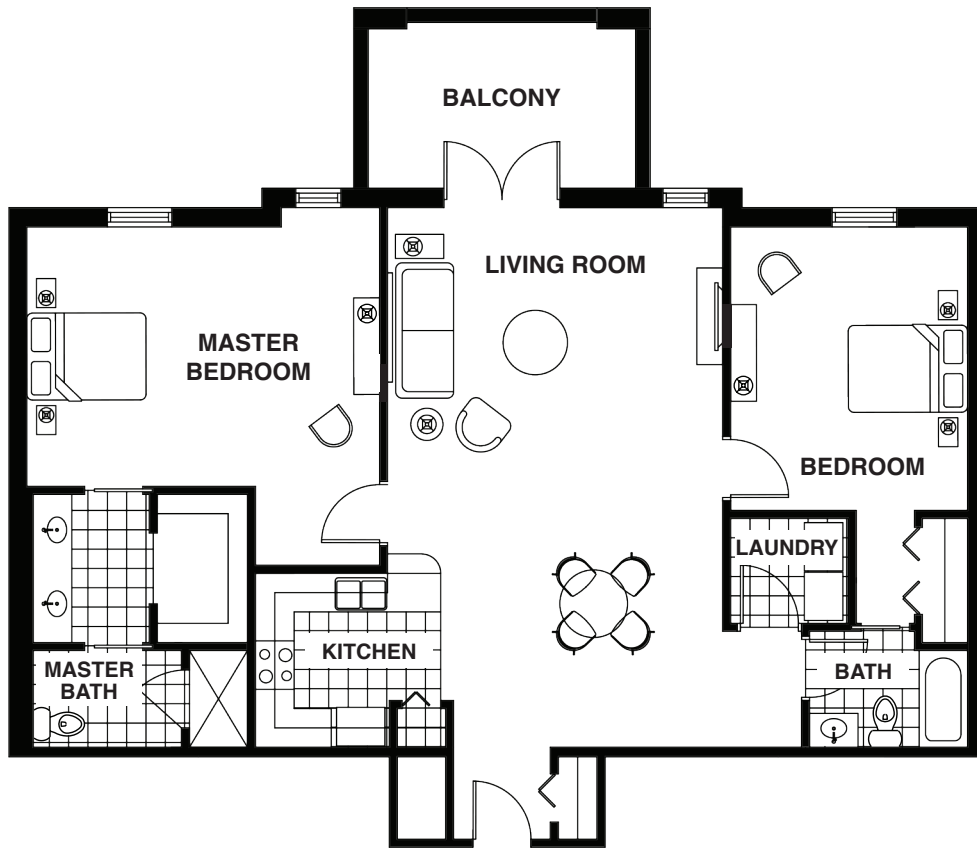


THE ARGYLL

2 Bedrooms / 2 Baths



THE ARGYLL

2 Bedrooms / 2 Baths

900-1,400 sq ft

(approximate)

_____ monthly

Second person monthly costs ____.
(Meals ____, administration fee ____, activities ____).

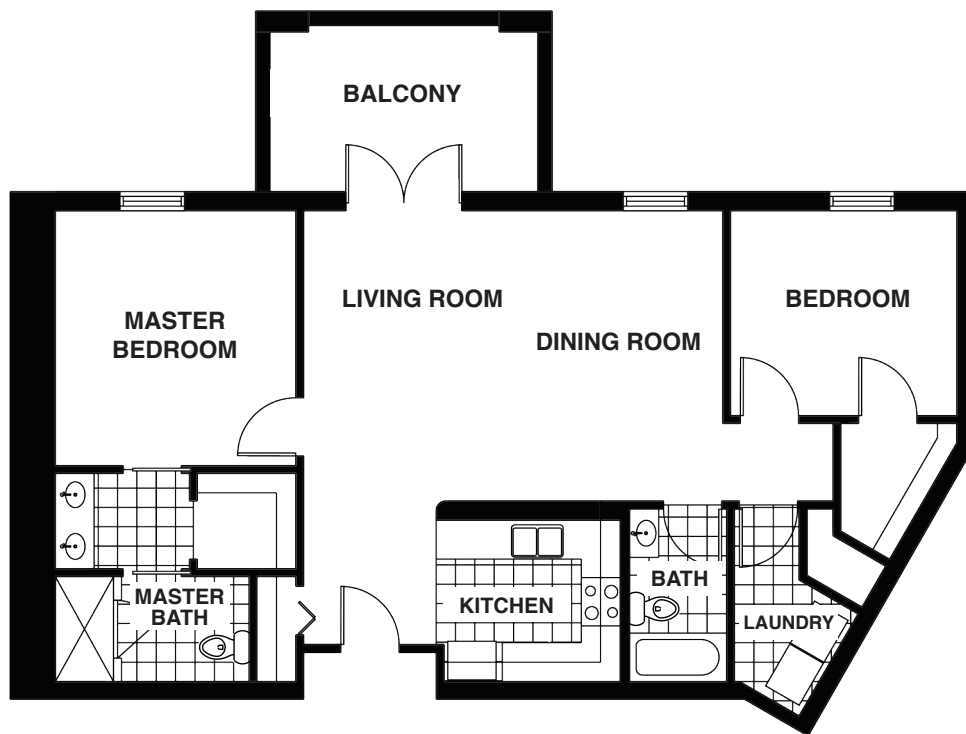
Lease includes: utilities, trash, taxes, security, activities, dinner service Monday through Friday per person, common area maintenance, lawn maintenance, insurance, common area housekeeping, capital reserve, and administration fees.

Apartment sizes are approximate. Lease fees are contingent upon size of apartment and may vary according to number of persons in the apartment.



THE CAMPBELLTOWN

2 Bedrooms / 2 Baths



THE CAMPBELLTOWN

2 Bedrooms / 2 Baths

900-1,400 sq ft

(approximate)

_____ monthly

Second person monthly costs ____.
(Meals ____, administration fee ____, activities ____).

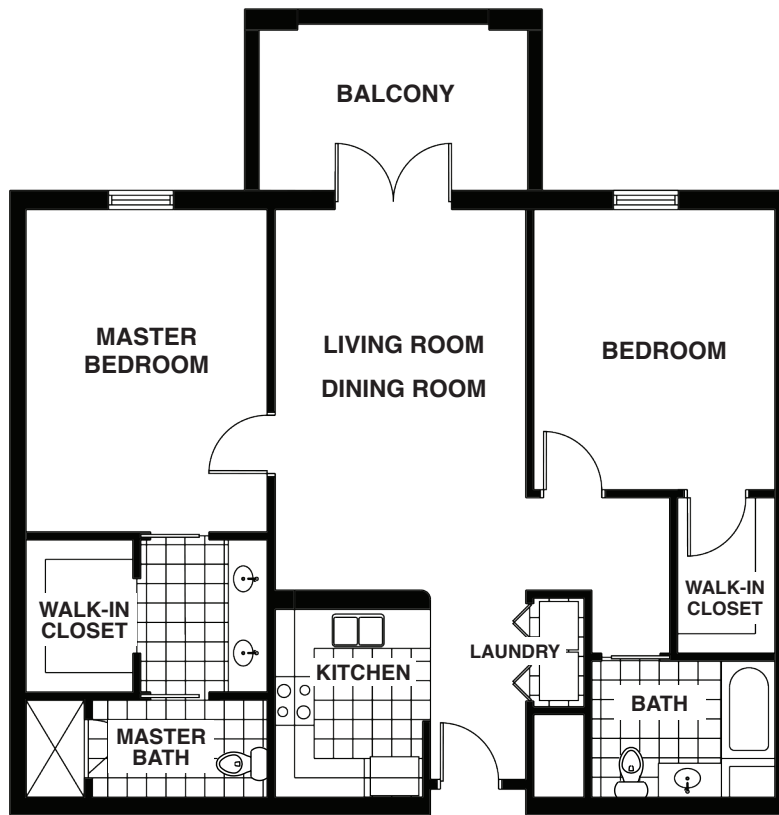
Lease includes: utilities, trash, taxes, security, activities, dinner service Monday through Friday per person, common area maintenance, lawn maintenance, insurance, common area housekeeping, capital reserve, and administration fees.

Apartment sizes are approximate. Lease fees are contingent upon size of apartment and may vary according to number of persons in the apartment.



THE MACDONALD

2 Bedrooms / 2 Baths



THE MACDONALD

2 Bedrooms / 2 Baths

900-1,400 sq ft

(approximate)

_____ monthly

Second person monthly costs ____.
(Meals ____, administration fee ____, activities ____).

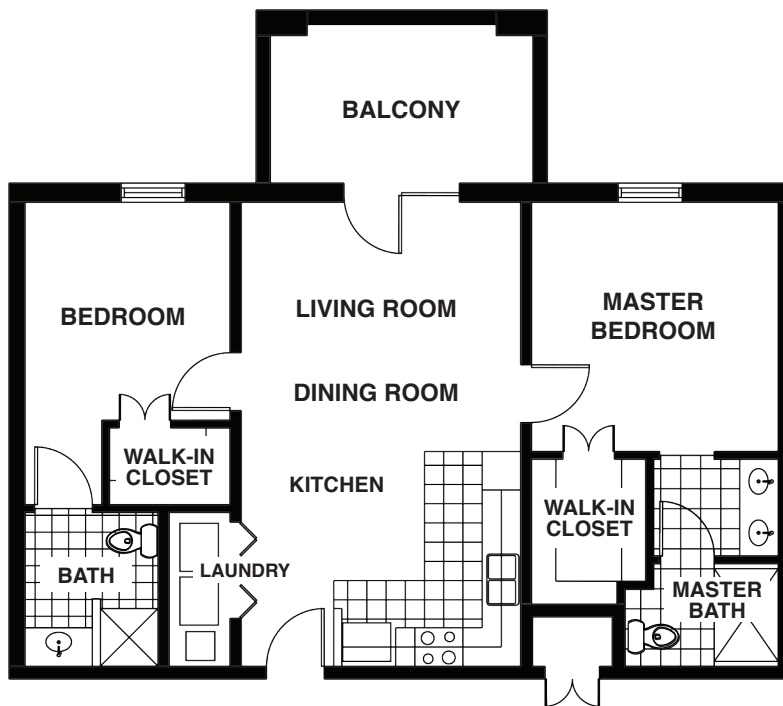
Lease includes: utilities, trash, taxes, security, activities, dinner service Monday through Friday per person, common area maintenance, lawn maintenance, insurance, common area housekeeping, capital reserve, and administration fees.

Apartment sizes are approximate. Lease fees are contingent upon size of apartment and may vary according to number of persons in the apartment.



THE MACKENZIE

2 Bedrooms / 2 Baths



THE MACKENZIE

2 Bedrooms / 2 Baths

900-1,400 sq ft

(approximate)

_____ monthly

Second person monthly costs ____.
(Meals ____, administration fee ____, activities ____).

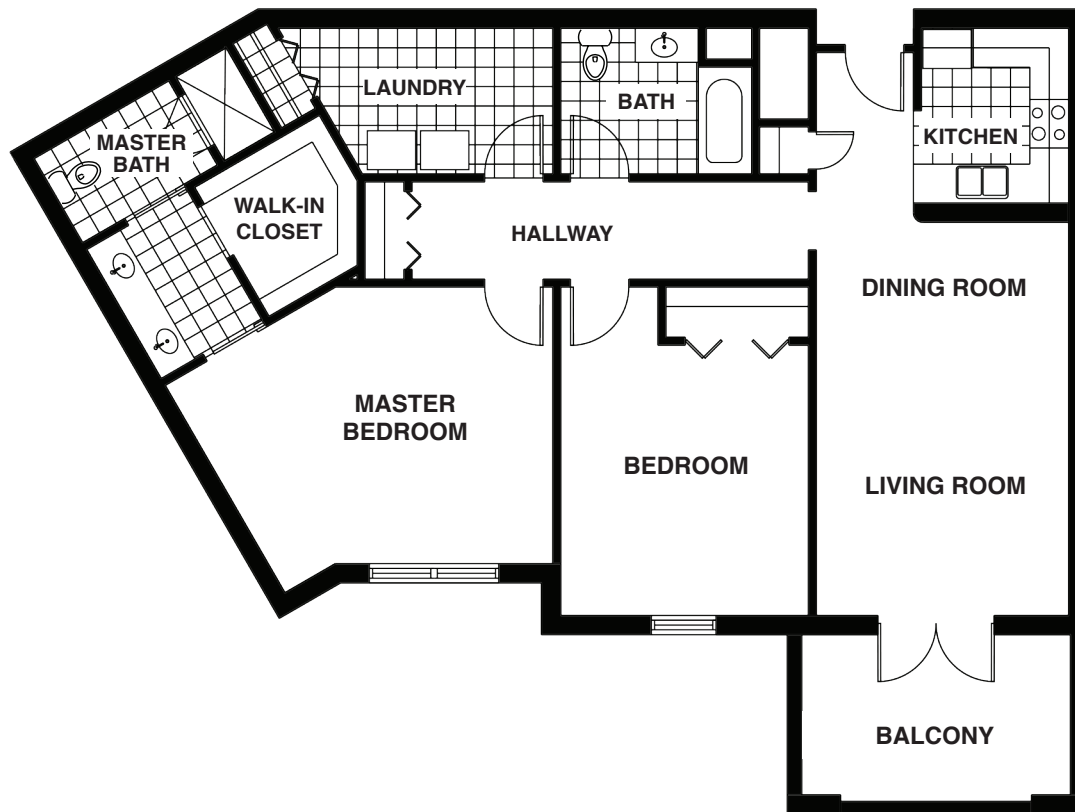
Lease includes: utilities, trash, taxes, security, activities, dinner service Monday through Friday per person, common area maintenance, lawn maintenance, insurance, common area housekeeping, capital reserve, and administration fees.

Apartment sizes are approximate. Lease fees are contingent upon size of apartment and may vary according to number of persons in the apartment.



THE MCFAYDEN

2 Bedrooms / 2 Baths



THE MCFAYDEN

2 Bedrooms / 2 Baths

900-1,400 sq ft

(approximate)

_____ monthly

Second person monthly costs ____.
(Meals ____, administration fee ____, activities ____).

Lease includes: utilities, trash, taxes, security, activities, dinner service Monday through Friday per person, common area maintenance, lawn maintenance, insurance, common area housekeeping, capital reserve, and administration fees.

Apartment sizes are approximate. Lease fees are contingent upon size of apartment and may vary according to number of persons in the apartment.

